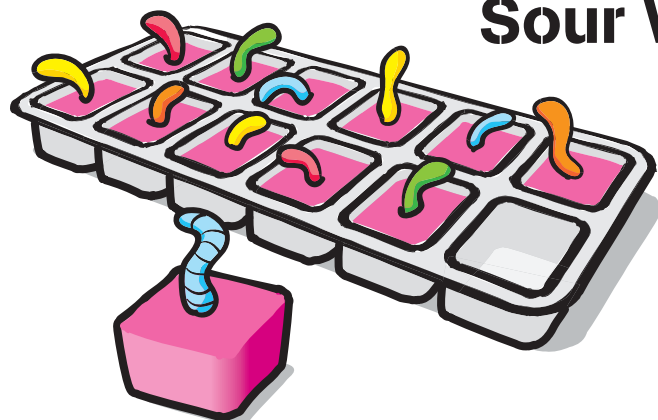


Sour Worm Ice Cubes



www.ToxicWasteCandy.com

©© Circle City Marketing Inc., Carmel IN 46032 USA.

What you'll need:

Toxic Waste® Sour & Chewy Worms
A packet of your favorite powdered drink mix
Water
Ice cube tray

1. Mix powdered drink and water in a pitcher following the directions on the packet.
2. Pour drink into ice cube tray.
3. Put one Sour & Chewy Worm in each section with part sticking out.
4. Place in freezer for 4 to 6 hours until frozen.

Enjoy!

Toxic Waste® Edible Slime

Parental supervision recommended while using blender.

What you'll need:

2 - Toxic Waste® Slime Lickers® (same color, or mix and match)
1 - 2 oz. package of Toxic Waste® Sour Smog Balls®
1 - Small drum of Toxic Waste® Hazardously Sour Candy®
1 - Package of clear, instant gelatin mix
Your favorite ice cream or yogurt

1. Squeeze the liquid from Slime Lickers into a bowl.
2. Put 2 oz. of Sour Smog Balls® in a blender and grind to coarse powder. Add to bowl.
3. Put 2 oz. of Toxic Waste® Hazardously Sour Candy® in the blender and grind to coarse powder. Add to bowl.
4. Add package of clear, instant gelatin to bowl and mix well.
5. Place in refrigerator overnight to firm up.

Add Edible Slime to your favorite ice cream or yogurt and enjoy!



www.ToxicWasteCandy.com

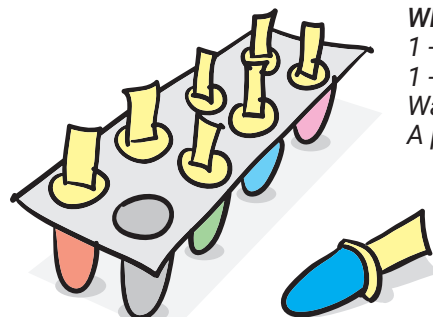
©© Circle City Marketing Inc., Carmel IN 46032 USA.

Toxic Waste® Sour Popsicles

Parental supervision recommended while using blender and stove.

What you'll need:

1 - 2 oz. package of Toxic Waste® Sour Smog Balls® separated by color
1 - Small drum of Toxic Waste® Hazardously Sour Candy® separated by color
Water
A popsicle tray



www.ToxicWasteCandy.com

©© Circle City Marketing Inc., Carmel IN 46032 USA.

1. In a blender, grind each color group of Smog Balls® and Toxic Waste® candies into a fine powder.
2. In a sauce pan, heat similar color Smog Balls® and Toxic Waste® candy and 3/4 cup water until powder is dissolved into a syrup. Pour into a ceramic cup and set aside to cool. Repeat with other color groups.
3. Pour cooled syrups into popsicle tray and insert handles. Freeze overnight.
Run warm tap water over tray to free popsicles and enjoy!